

**150**   
1865 - 2015

**Join Today**

**For more information on how to join**

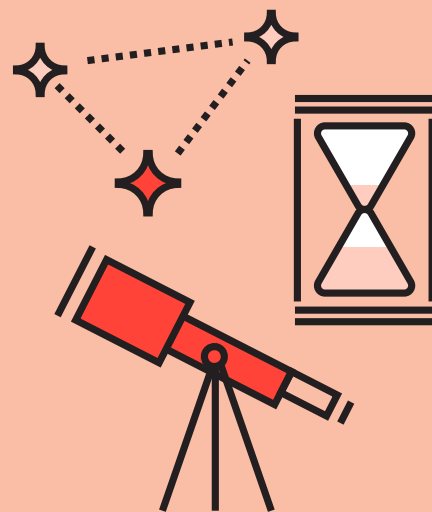
[ITU-R\\_Membership@itu.int](mailto:ITU-R_Membership@itu.int)

**For more information on Study Group 7**

[rsg7@itu.int](mailto:rsg7@itu.int)



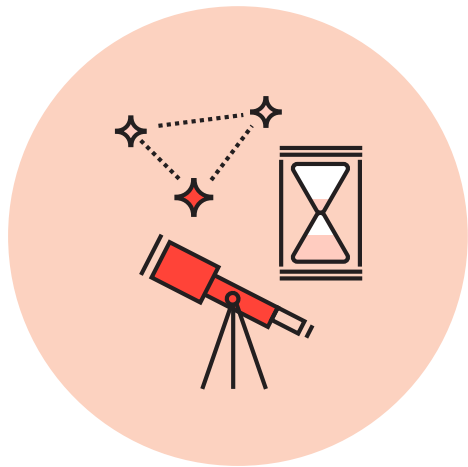
[www.itu.int/go/rsg7](http://www.itu.int/go/rsg7)



## ITU-R Study Group 7

### Science Services





Study Group 7 is essential for developing and maintaining ITU-R Recommendations, Reports and Handbooks on science services, which are used worldwide

### Global Scope

- ITU-R Study Group 7 studies and produces ITU-R Recommendations, Reports and Handbooks on technical basis and principles ensuring non-interference operation and development of systems in the space operation, space research, earth-exploration, meteorological satellite, radioastronomy and standard frequency and time signal services.
- ITU-R Study Group 7 is composed of four Working Parties. These Working Parties are specialized to address the aspects of science services relating to their fields of expertise.
- The main topics covered by Study Group 7 are:
  - » Universal time scale and dissemination of standard time and frequency signals.

- » Technical and operational characteristics of applications of science services.
- » Characteristics and spectrum requirements of satellite systems using nano and pico Satellites.
- » Factors which affect frequency sharing between data relay satellite systems.
- » Space operation and space research services frequency bands for telecommand links.
- » Radiocommunications for human space flights Earth exploration-satellite service (active and passive) fundamentals, regulation and applications.
- » Technical and operational characteristics of applications of science services.
- » Technical factors involved in the protection of radioastronomical observations.
- » Preferred frequency bands and protection criteria for radio astronomy measurements in space.

### Connect With Your Peers

- Participants of ITU-R Study Group 7 meetings are diverse and include administrations, network operators, service providers, equipment manufacturers, international organizations, and academia.
- Study Group 7 is essential for developing and maintaining **ITU-R Recommendations**, Reports and Handbooks on science services, which are used worldwide.
- Topics of discussion and study are contribution-driven and are based on the priorities set by the **Radiocommunication Assemblies** and **World Radiocommunication Conferences**.
- By joining Study Group 7, you will have the opportunity to impact the development of recommendations targeted towards science services. As a Member, you will also have the opportunity to network and collaborate with other participating specialists from government, universities, research institutes, and industry representatives around the world and thus contribute to the improvement of radiocommunications.